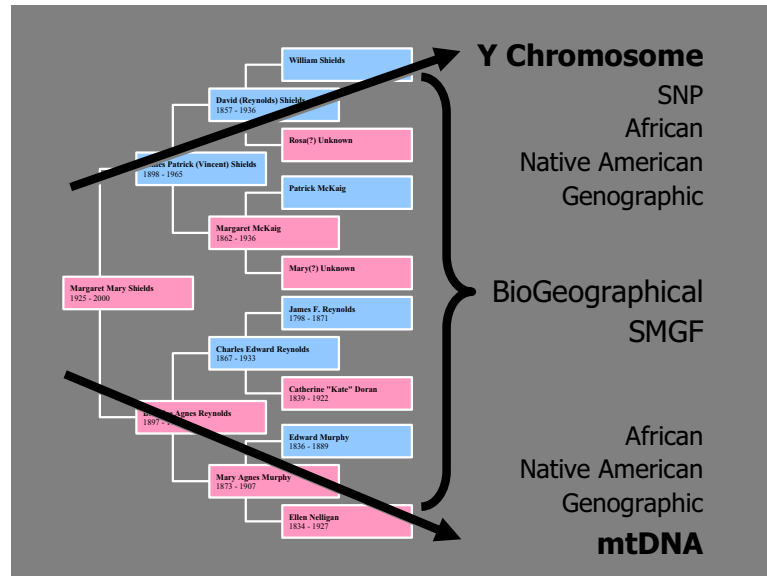


- Correlating genetic (Y, mtDNA & autosomal) and genealogical data (dates, places, names prior to 1900)
- Query database by entering results from commercial lab

Perhaps the most important point to remember about all these tests is that . . . most only address certain portions of the family tree!



Resources:

- GENEALOGY-DNA Mailing List: <http://lists.rootsweb.com/index/other/GENEALOGY-DNA.html>
- To find existing surname studies: search www.ysearch.org, www.ybase.org, www.smgf.org, and testing company sites, as well as www.worldfamilies.net
- International Society of Genetic Genealogy: www.isogg.org/
- *Trace Your Roots with DNA: Using Genetic Tests to Explore Your Family Tree* by Megan Smolenyak Smolenyak and Ann Turner
- Genetic Genealogy Articles: honoringourancestors.com/library.html#three and www.genetealogy.com